

# **For Your Information**

**2001-02 STUDENT RETENTION AND GRADUATION REPORT  
THE UNIVERSITY OF TENNESSEE  
KNOXVILLE CAMPUS**

**JANUARY 2003**

**Office of Institutional  
Research and Assessment**

**University of Tennessee**

**2001-02 STUDENT RETENTION AND GRADUATION REPORT  
THE UNIVERSITY OF TENNESSEE  
KNOXVILLE CAMPUS**

**JANUARY 2003**

**BY  
BALAJI RAMANATHAN  
RESEARCH ASSOCIATE**

**OFFICE OF INSTITUTIONAL RESEARCH AND ASSESSMENT  
600 HENLEY STREET, SUITE 211  
UT CONFERENCE CENTER BUILDING  
KNOXVILLE, TENNESSEE 37996-4122**

**<http://web.utk.edu/~oira/>**

**E01-0160-001-01**

# **STUDENT GRADUATION AND RETENTION REPORT**

## **ACADEMIC YEAR 2001-02**

### **HIGHLIGHTS**

#### **Enrollment**

- More Females than Males since 1995.
- 11% growth in Black enrollment in Fall 2002 compared to Fall 2001.
- 33% reduction in Undeclared College at the time of enrollment as compared to Fall 2001.
- 25% growth in enrollment for Arts and Sciences as compared to Fall 2001.
- Majority of the students that have enrolled have ACT scores above 22.
- 93% increase in enrollment from students with High School GPA more than 3.5; constitutes 48% of the 2002 first-time freshmen cohort.
- 35% increase in enrollment from students with ACT scores of 26 and above since 1992; constitutes 33% of the 2002 freshmen cohort.
- Out-of-state freshmen enrollment has grown as a percent of the total from 16% in 1992 to 20% in 2002.
- Distribution of college affiliations remains stable over the ten year period.

#### **Graduation**

- Average four year graduation rate is about 26%.
- Average five year graduation rate is about 51%.
- Average six year graduation rate is 57%.
- Male six year graduation rate has slightly decreased since 1992.
- Highest six year graduation rate (1992 – 1996) was in the College of Communications at about 62%; lowest was the College of Nursing at 52%.
- Higher ACT scores and higher HSGPA's are positively related to graduation.
- In-state students are somewhat more likely to graduate than out-of-state students.

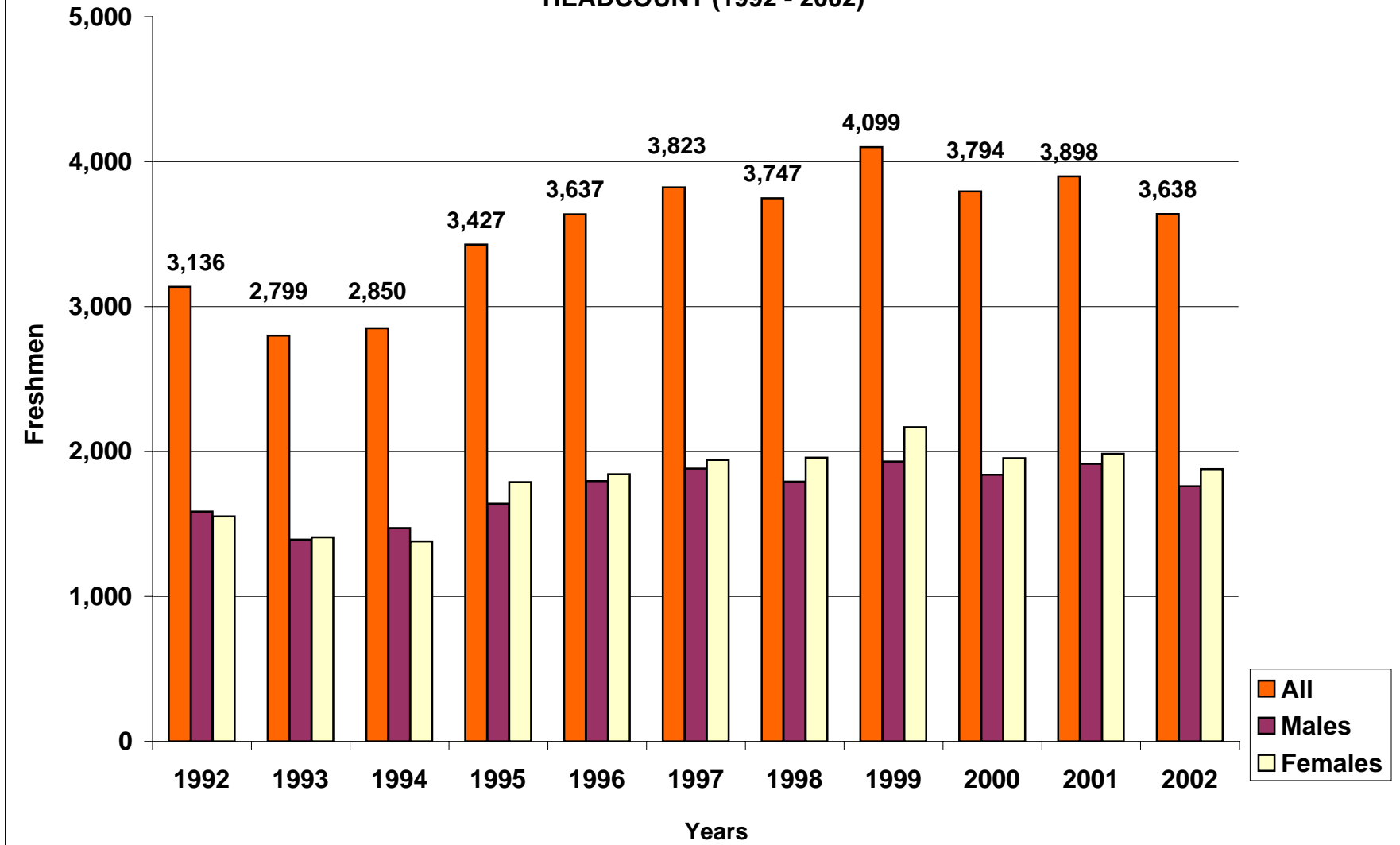
## **Retention**

- 7% reduction in Male first year retention as compared to 1992 but Female first year retention is almost the same as 1992.
- First year retention rate for Architecture is almost 98%, the highest for any year, any college, since 1992.
- First year retention for most of the colleges has decreased.
- Black students have the highest retention rate (79%) over the ten year period.
- On average the university will lose 23% of its freshmen class, 9% of its sophomore class, and 6% of its junior class. 5% who achieve junior status do not graduate in 6 years.

## FIRST-TIME FULL-TIME FRESHMEN ENROLLMENT HEADCOUNT (1992 - 2002)

ACADEMIC YEAR	1992	1993	1994	1995	1996	1997	1998	1999	2000	2001	2002
<b>ALL</b>	<b>3,136</b>	<b>2,799</b>	<b>2,850</b>	<b>3,427</b>	<b>3,637</b>	<b>3,823</b>	<b>3,747</b>	<b>4,099</b>	<b>3,794</b>	<b>3,898</b>	<b>3,638</b>
MALE	1,584	1,391	1,470	1,639	1,795	1,882	1,791	1,931	1,840	1,914	1,761
FEMALE	1,552	1,408	1,380	1,788	1,842	1,941	1,956	2,168	1,954	1,984	1,877
<b>RACE</b>											
BLACK	209	175	144	153	192	243	273	328	268	290	321
OTHER	112	103	102	133	140	172	138	164	162	203	202
WHITE	2,815	2,521	2,604	3,141	3,305	3,408	3,336	3,607	3,364	3,405	3,115
<b>COLLEGE</b>											
NO COLLEGE	692	662	693	914	1,069	1,082	1,074	1,135	1,034	1,054	704
AGRI.& NATURAL RESOURCES	124	109	126	146	132	150	139	177	125	104	112
ARCHITECTURE	68	64	69	73	86	99	82	101	81	79	95
ARTS AND SCIENCES	836	773	807	877	928	954	927	1,007	953	942	1,173
BUSINESS ADM	502	414	425	536	525	623	612	673	644	663	556
COMMUNICATIONS	181	122	121	138	159	173	165	205	260	219	222
EDUCATION	76	60	71	161	163	177	153	162	167	157	170
ENGINEERING	490	422	364	396	366	416	437	438	365	469	424
HUMAN ECOLOGY	56	57	69	66	83	61	75	84	41	58	52
NURSING	99	101	89	102	101	68	61	105	99	130	121
SOCIAL WORK	12	15	16	18	25	20	22	12	25	23	9
<b>ACT SCORE</b>											
NO ACT SCORE	34	26	25	24	29	31	18	18	11	19	15
< 18	77	57	97	122	98	123	104	58	33	157	24
18 --- 21	951	859	900	951	1,006	1,021	1,075	1,217	1,070	1,150	926
22 --- 25	1,196	1,074	1,056	1,333	1,333	1,497	1,401	1,561	1,468	1,405	1,484
26 --- 29	664	601	568	719	842	827	785	904	818	815	839
30 --- 36	214	182	204	278	329	324	364	341	394	352	350
<b>RESIDENCY</b>											
OUT-OF-STATE	508	436	469	611	600	749	758	747	733	729	722
TENNESSEE RESIDENT	2,628	2,363	2,381	2,816	3,037	3,074	2,989	3,352	3,061	3,169	2,916
<b>HIGH SCHOOL GPA</b>											
NO GPA SCORE	22	24	16	21	22	19	21	21	12	23	15
BELOW 2.5	344	274	315	290	301	254	198	188	168	283	197
2.5 - 2.9	901	725	728	854	819	903	842	798	686	730	621
3.0 - 3.49	988	898	905	1,131	1,189	1,255	1,239	1,360	1,325	1,195	1,103
ABOVE 3.5	881	878	886	1,131	1,306	1,392	1,447	1,732	1,603	1,667	1,702

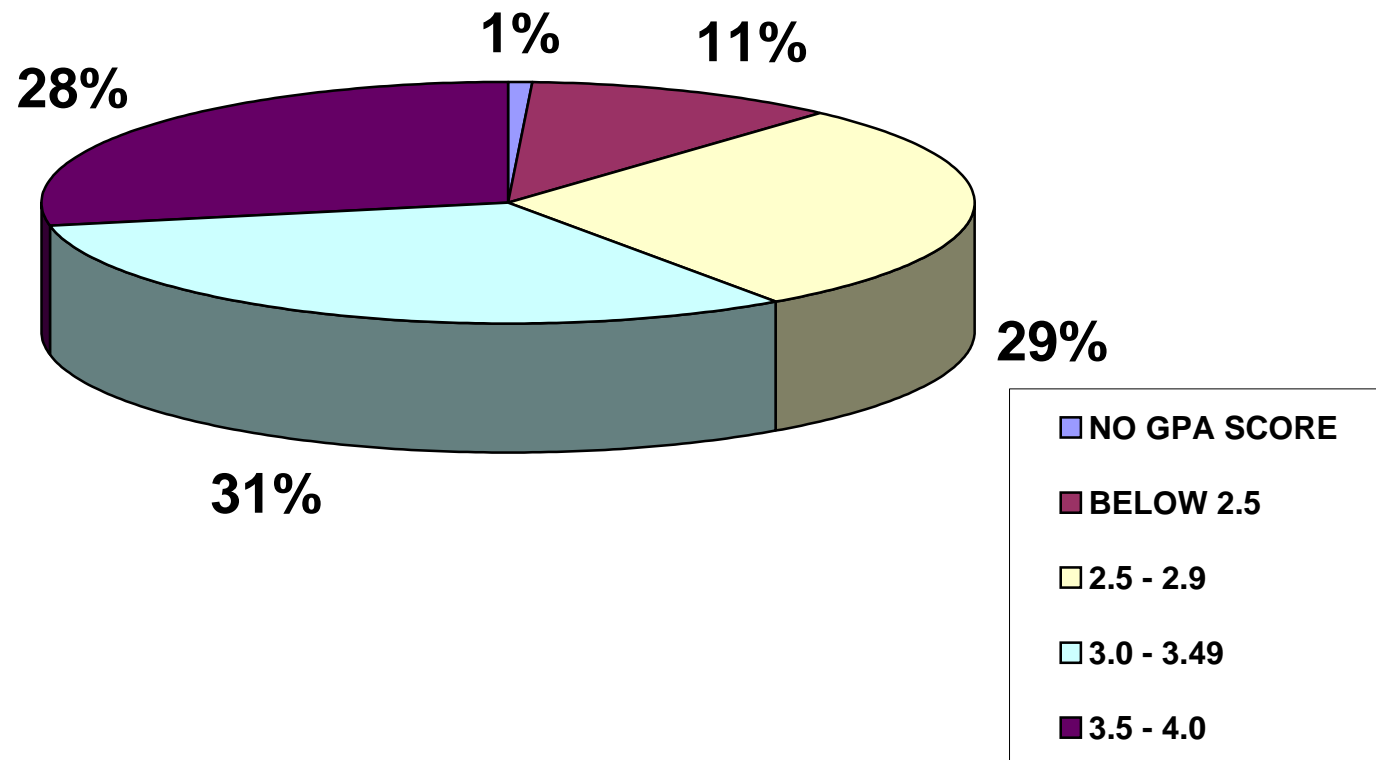
### FIRST-TIME FULL-TIME FRESHMEN ENROLLMENT HEADCOUNT (1992 - 2002)



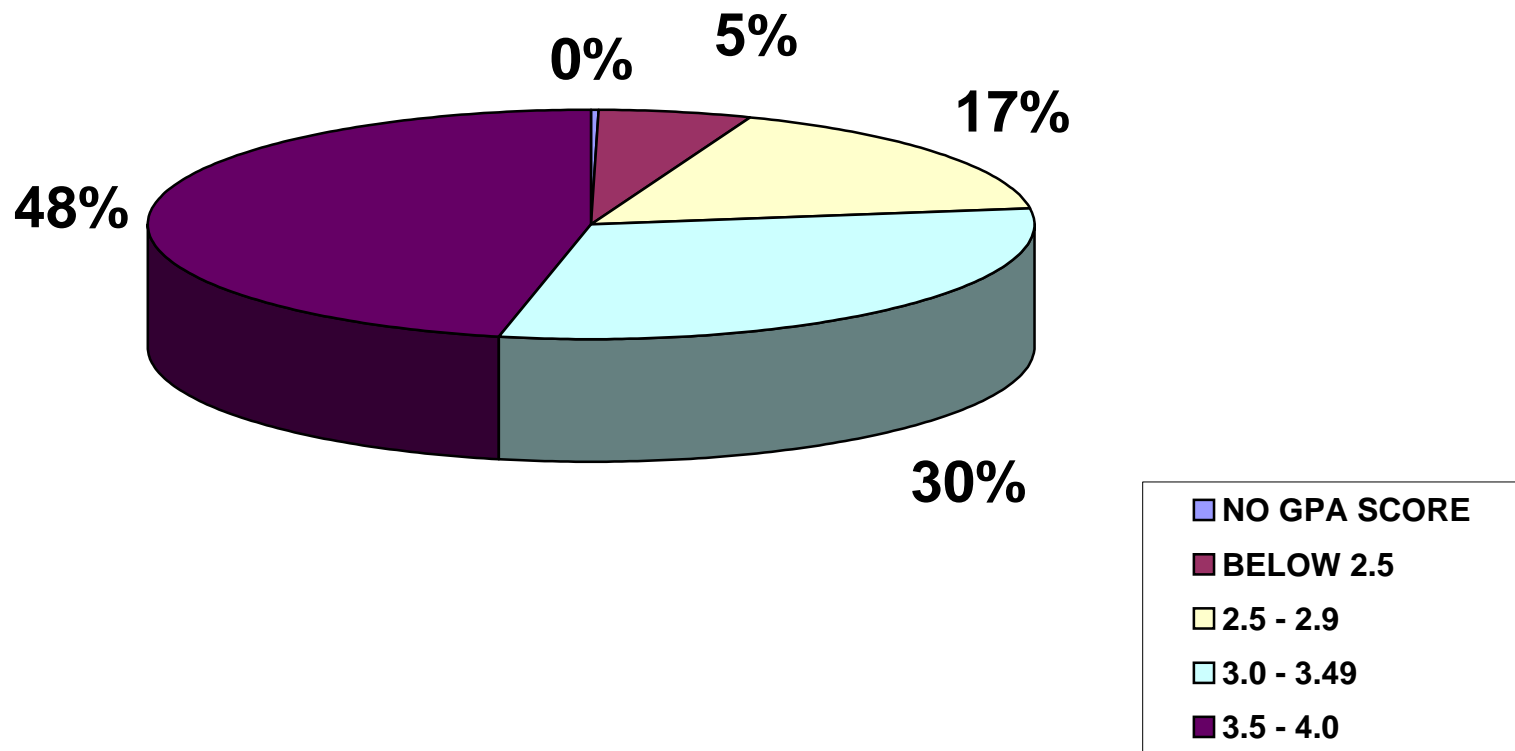
## FIRST-TIME FULL-TIME FRESHMEN ENROLLMENT PERCENT (1992 - 2002)

ACADEMIC YEAR	1992	1993	1994	1995	1996	1997	1998	1999	2000	2001	2002
<b>ALL</b>	<b>3,136</b>	<b>2,799</b>	<b>2,850</b>	<b>3,427</b>	<b>3,637</b>	<b>3,823</b>	<b>3,747</b>	<b>4,099</b>	<b>3,794</b>	<b>3,898</b>	<b>3,638</b>
MALE	51%	50%	52%	48%	49%	49%	48%	47%	48%	49%	48%
FEMALE	49%	50%	48%	52%	51%	51%	52%	53%	52%	51%	52%
<b>RACE</b>											
BLACK	7%	6%	5%	4%	5%	6%	7%	8%	7%	7%	9%
OTHER	4%	4%	4%	4%	4%	4%	4%	4%	4%	5%	6%
WHITE	90%	90%	91%	92%	91%	89%	89%	88%	89%	87%	86%
<b>COLLEGE</b>											
NO COLLEGE	22%	24%	24%	27%	29%	28%	29%	28%	27%	27%	19%
AGRI.& NATURAL RESOURCES	4%	4%	4%	4%	4%	4%	4%	4%	3%	3%	3%
ARCHITECTURE	2%	2%	2%	2%	2%	3%	2%	2%	2%	2%	3%
ARTS AND SCIENCES	27%	28%	28%	26%	26%	25%	25%	25%	25%	24%	32%
BUSINESS ADM	16%	15%	15%	16%	14%	16%	16%	16%	17%	17%	15%
COMMUNICATIONS	6%	4%	4%	4%	4%	5%	4%	5%	7%	6%	6%
EDUCATION	2%	2%	2%	5%	4%	5%	4%	4%	4%	4%	5%
ENGINEERING	16%	15%	13%	12%	10%	11%	12%	11%	10%	12%	12%
HUMAN ECOLOGY	2%	2%	2%	2%	2%	2%	2%	2%	1%	1%	1%
NURSING	3%	4%	3%	3%	3%	2%	2%	3%	3%	3%	3%
SOCIAL WORK	0%	1%	1%	1%	1%	1%	1%	0%	1%	1%	0%
<b>ACT SCORE</b>											
NO ACT SCORE	1%	1%	1%	1%	1%	1%	0%	0%	0%	0%	0%
< 18	2%	2%	3%	4%	3%	3%	3%	1%	1%	4%	1%
18 --- 21	30%	31%	32%	28%	28%	27%	29%	30%	28%	30%	25%
22 --- 25	38%	38%	37%	39%	37%	39%	37%	38%	39%	36%	41%
26 --- 29	21%	21%	20%	21%	23%	22%	21%	22%	22%	21%	23%
30 --- 36	7%	7%	7%	8%	9%	8%	10%	8%	10%	9%	10%
<b>RESIDENCY</b>											
OUT-OF-STATE	16%	16%	16%	18%	16%	20%	20%	18%	19%	19%	20%
TENNESSEE RESIDENT	84%	84%	84%	82%	84%	80%	80%	82%	81%	81%	80%
<b>HIGH SCHOOL GPA</b>											
NO GPA SCORE	1%	1%	1%	1%	1%	0%	1%	1%	0%	1%	0%
BELOW 2.5	11%	10%	11%	8%	8%	7%	5%	5%	4%	7%	5%
2.5 - 2.9	29%	26%	26%	25%	23%	24%	22%	19%	18%	19%	17%
3.0 - 3.49	32%	32%	32%	33%	33%	33%	33%	33%	35%	31%	30%
ABOVE 3.5	28%	31%	31%	33%	36%	36%	39%	42%	42%	43%	47%

**FIRST-TIME FULL-TIME FRESHMEN  
GRADE POINT AVERAGE  
ACADEMIC YEAR 1992**



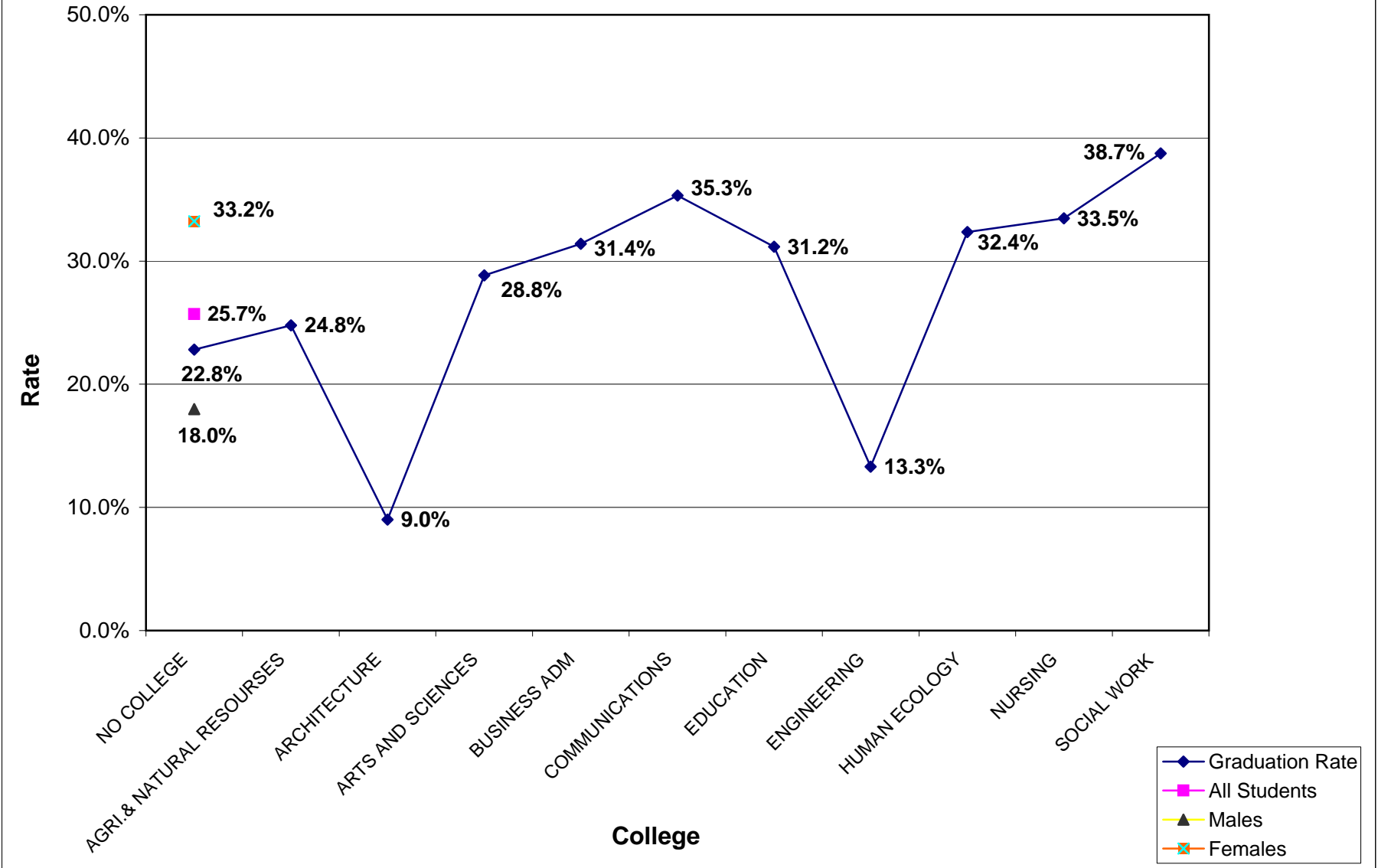
**FIRST-TIME FULL-TIME FRESHMEN  
GRADE POINT AVERAGE  
ACADEMIC YEAR 2002**



## FOUR YEAR GRADUATION RATES (1992 - 1998)

<b>ACADEMIC YEAR</b>	<b>1992</b>	<b>1993</b>	<b>1994</b>	<b>1995</b>	<b>1996</b>	<b>1997</b>	<b>1998</b>	<b>Average</b>
<b>ALL</b>	<b>22.6%</b>	<b>24.2%</b>	<b>23.6%</b>	<b>26.8%</b>	<b>28.4%</b>	<b>27.5%</b>	<b>26.8%</b>	<b>25.7%</b>
MALE	16.8%	17.4%	15.5%	20.2%	19.9%	19.3%	16.7%	<b>18.0%</b>
FEMALE	28.6%	30.8%	32.2%	32.9%	36.8%	35.4%	36.0%	<b>33.2%</b>
<b>RACE</b>								
BLACK	13.9%	15.4%	12.5%	19.0%	17.7%	20.6%	18.7%	<b>16.8%</b>
OTHER	24.1%	25.2%	18.6%	31.6%	30.7%	26.2%	21.7%	<b>25.4%</b>
WHITE	23.2%	24.7%	24.4%	27.0%	29.0%	28.0%	27.6%	<b>26.3%</b>
<b>COLLEGE</b>								
NO COLLEGE	17.8%	23.3%	22.1%	24.4%	24.7%	22.8%	24.6%	<b>22.8%</b>
AGRI.& NATURAL RESOURCES	25.0%	22.9%	25.4%	24.0%	25.8%	26.7%	23.7%	<b>24.8%</b>
ARCHITECTURE	13.2%	4.7%	8.7%	6.8%	5.8%	14.1%	9.8%	<b>9.0%</b>
ARTS AND SCIENCES	24.9%	26.6%	27.5%	29.2%	33.8%	29.7%	30.1%	<b>28.8%</b>
BUSINESS ADM	30.1%	30.2%	25.4%	32.5%	35.2%	35.0%	31.4%	<b>31.4%</b>
COMMUNICATIONS	32.0%	36.1%	29.8%	39.1%	36.5%	40.5%	33.3%	<b>35.3%</b>
EDUCATION	22.4%	35.0%	32.4%	33.5%	31.9%	32.2%	30.7%	<b>31.2%</b>
ENGINEERING	13.3%	11.6%	11.0%	15.7%	12.3%	13.9%	15.3%	<b>13.3%</b>
HUMAN ECOLOGY	26.8%	33.3%	29.0%	33.3%	30.1%	39.3%	34.7%	<b>32.4%</b>
NURSING	28.3%	25.7%	31.5%	24.5%	42.6%	45.6%	36.1%	<b>33.5%</b>
SOCIAL WORK	41.7%	26.7%	31.3%	50.0%	36.0%	40.0%	45.5%	<b>38.7%</b>
<b>ACT SCORE</b>								
NO ACT SCORE	11.8%	3.8%	12.0%	20.8%	3.4%	19.4%	11.1%	<b>11.8%</b>
< 18	13.0%	19.3%	14.4%	13.9%	18.4%	14.6%	10.6%	<b>14.9%</b>
18 --- 21	18.0%	17.5%	18.8%	18.9%	19.7%	18.3%	19.4%	<b>18.7%</b>
22 --- 25	20.7%	24.8%	22.5%	28.3%	26.7%	27.5%	25.3%	<b>25.1%</b>
26 --- 29	29.2%	29.3%	29.9%	30.0%	37.6%	35.9%	32.7%	<b>32.1%</b>
30 --- 36	39.3%	39.6%	38.7%	44.6%	43.8%	40.4%	46.7%	<b>41.9%</b>
<b>RESIDENCY</b>								
OUT-OF-STATE	23.4%	22.9%	22.2%	23.7%	27.0%	25.5%	22.2%	<b>23.8%</b>
TENNESSEE RESIDENT	22.5%	24.4%	23.9%	27.5%	28.7%	27.9%	27.9%	<b>26.1%</b>
<b>HIGH SCHOOL GPA</b>								
NO GPA SCORE	13.6%	20.8%	25.0%	9.5%	13.6%	31.6%	9.5%	<b>17.7%</b>
BELOW 2.5	6.1%	7.3%	7.3%	9.0%	7.3%	5.5%	7.1%	<b>7.1%</b>
2.5 - 2.9	12.1%	13.2%	13.3%	14.9%	15.1%	14.1%	12.4%	<b>13.6%</b>
3.0 - 3.49	26.0%	25.1%	23.9%	25.6%	25.2%	24.1%	22.3%	<b>24.6%</b>
3.5 - 4.0	36.3%	37.6%	37.6%	42.0%	44.8%	43.2%	41.9%	<b>40.5%</b>

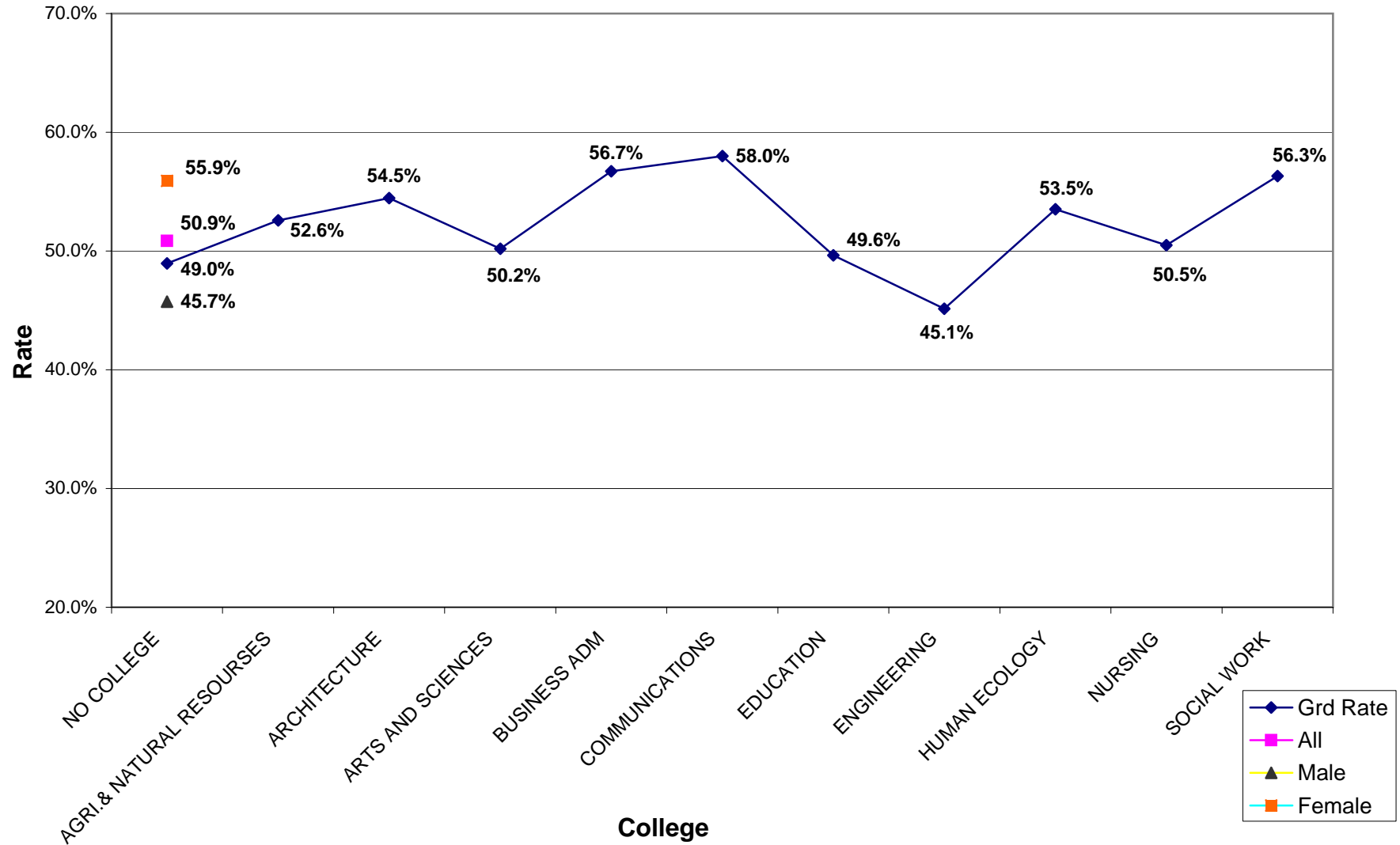
**AVERAGE FOUR YEAR GRADUATION RATES (1992 - 1998)**



## FIVE YEAR GRADUATION RATES (1992 - 1997)

<b>ACADEMIC YEAR</b>	<b>1992</b>	<b>1993</b>	<b>1994</b>	<b>1995</b>	<b>1996</b>	<b>1997</b>	<b>AVERAGE</b>
<b>ALL</b>	<b>48.4%</b>	<b>49.9%</b>	<b>49.4%</b>	<b>52.4%</b>	<b>51.8%</b>	<b>53.2%</b>	<b>50.9%</b>
MALE	44.6%	46.2%	44.6%	46.3%	45.7%	47.0%	45.7%
FEMALE	52.3%	53.5%	54.6%	58.1%	57.8%	59.1%	55.9%
<b>RACE</b>							
BLACK	34.9%	35.4%	36.1%	44.4%	39.1%	47.7%	39.6%
OTHER	48.2%	55.3%	34.3%	58.6%	55.0%	47.1%	49.8%
WHITE	49.4%	50.7%	50.7%	52.6%	52.4%	53.8%	51.6%
<b>COLLEGE</b>							
NO COLLEGE	44.4%	49.8%	49.4%	51.4%	49.7%	49.0%	49.0%
AGRI.& NATURAL RESOURCES	54.0%	51.4%	53.2%	46.6%	53.0%	57.3%	52.6%
ARCHITECTURE	52.9%	40.6%	56.5%	52.1%	64.0%	60.6%	54.5%
ARTS AND SCIENCES	47.6%	49.9%	47.8%	51.0%	52.7%	52.1%	50.2%
BUSINESS ADM	55.6%	55.1%	53.6%	59.5%	57.1%	59.4%	56.7%
COMMUNICATIONS	58.0%	59.0%	52.9%	62.3%	52.8%	63.0%	58.0%
EDUCATION	40.8%	51.7%	50.7%	57.8%	44.8%	52.0%	49.6%
ENGINEERING	44.5%	42.2%	42.9%	46.7%	46.4%	48.1%	45.1%
HUMAN ECOLOGY	50.0%	56.1%	55.1%	57.6%	48.2%	54.1%	53.5%
NURSING	43.4%	47.5%	48.3%	42.2%	58.4%	63.2%	50.5%
SOCIAL WORK	50.0%	60.0%	56.3%	55.6%	56.0%	60.0%	56.3%
<b>ACT SCORE</b>							
NO ACT SCORE	29.4%	30.8%	24.0%	25.0%	17.2%	25.8%	25.4%
< 18	23.4%	40.4%	30.9%	41.8%	34.7%	35.8%	34.5%
18 --- 21	42.6%	42.5%	42.8%	41.9%	41.3%	45.3%	42.7%
22 --- 25	47.1%	51.0%	50.0%	54.2%	50.7%	53.0%	51.0%
26 --- 29	57.1%	55.7%	57.0%	59.1%	62.4%	61.5%	58.8%
30 --- 36	66.8%	64.3%	66.2%	69.8%	69.9%	66.0%	67.2%
<b>RESIDENCY</b>							
OUT-OF-STATE	47.0%	51.6%	47.8%	50.7%	48.5%	51.9%	49.6%
TENNESSEE RESIDENT	48.7%	49.6%	49.7%	52.8%	52.5%	53.4%	51.1%
<b>HIGH SCHOOL GPA</b>							
NO GPA SCORE	31.8%	54.2%	50.0%	19.0%	36.4%	36.8%	38.0%
BELOW 2.5	23.5%	26.3%	23.5%	26.6%	23.6%	20.9%	24.1%
2.5 - 2.9	34.7%	37.9%	36.7%	39.1%	33.6%	35.9%	36.3%
3.0 - 3.49	54.0%	50.9%	52.6%	51.8%	50.4%	53.3%	52.2%
3.5 - 4.0	66.2%	65.9%	65.8%	70.4%	71.4%	70.3%	68.3%

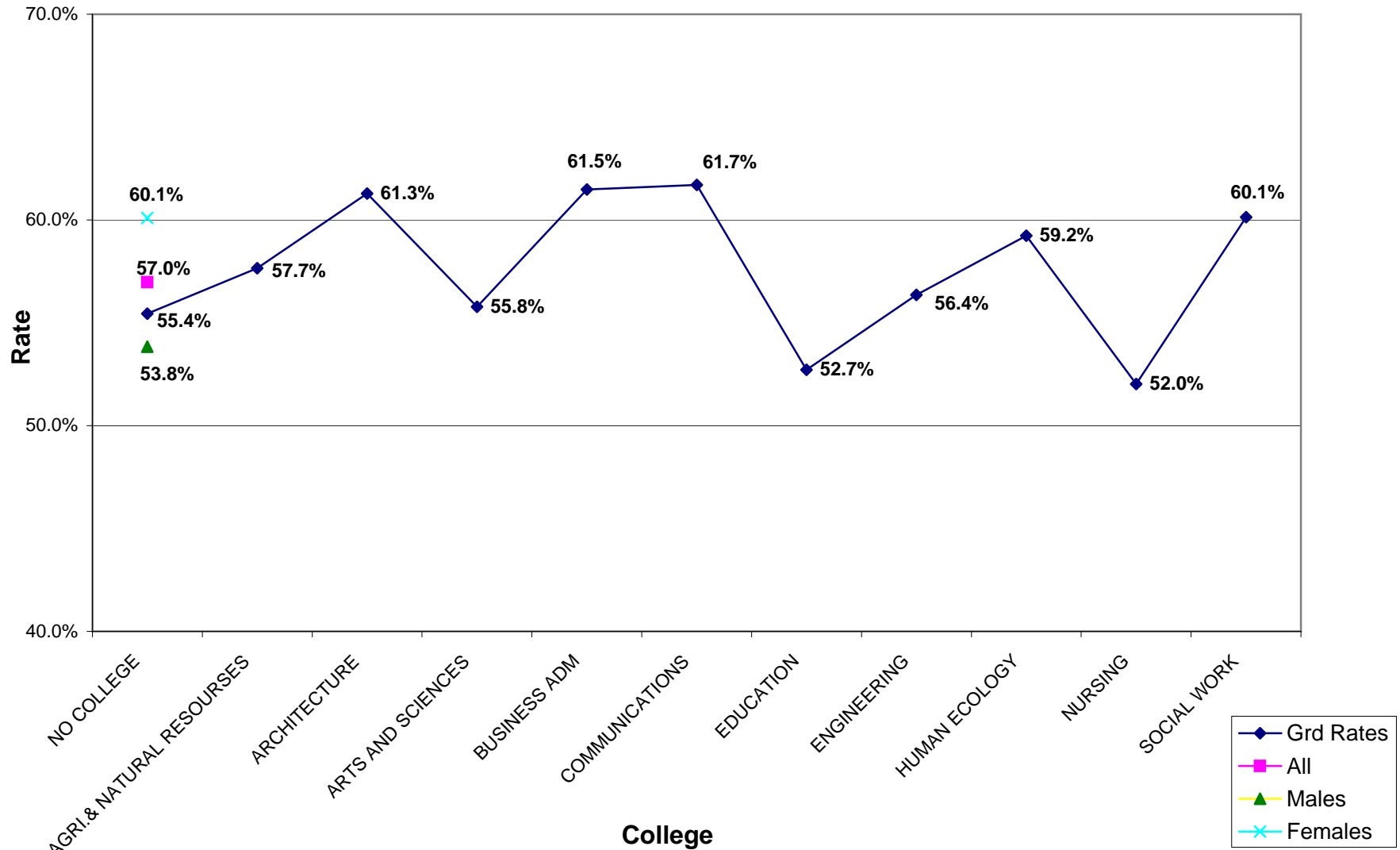
### AVERAGE FIVE YEAR GRADUATION RATES (1992 - 1997)



## SIX YEAR GRADUATION RATES (1992 - 1996)

<b>ACADEMIC YEAR</b>	<b>1992</b>	<b>1993</b>	<b>1994</b>	<b>1995</b>	<b>1996</b>	<b>Average</b>
<b>ALL</b>	<b>55.5%</b>	<b>56.9%</b>	<b>55.9%</b>	<b>58.7%</b>	<b>57.9%</b>	<b>57.0%</b>
MALE	54.2%	54.9%	52.7%	54.1%	53.3%	<b>53.8%</b>
FEMALE	56.9%	58.9%	59.4%	63.0%	62.3%	<b>60.1%</b>
<b>RACE</b>						
BLACK	44.0%	45.1%	44.4%	52.9%	46.4%	<b>46.6%</b>
OTHER	53.6%	64.1%	46.1%	62.4%	60.7%	<b>57.4%</b>
WHITE	56.4%	57.4%	57.0%	58.8%	58.4%	<b>57.6%</b>
<b>COLLEGE</b>						
NO COLLEGE	51.6%	57.6%	54.1%	57.9%	56.0%	<b>55.4%</b>
AGRI.& NATURAL RESOURCES	63.7%	55.0%	57.9%	54.1%	57.6%	<b>57.7%</b>
ARCHITECTURE	61.8%	51.6%	68.1%	57.5%	67.4%	<b>61.3%</b>
ARTS AND SCIENCES	54.9%	54.6%	54.2%	56.3%	58.9%	<b>55.8%</b>
BUSINESS ADM	60.2%	60.9%	59.8%	64.6%	61.9%	<b>61.5%</b>
COMMUNICATIONS	60.2%	63.9%	60.3%	68.1%	56.0%	<b>61.7%</b>
EDUCATION	47.4%	53.3%	53.5%	60.9%	48.5%	<b>52.7%</b>
ENGINEERING	55.5%	56.6%	55.5%	56.8%	57.4%	<b>56.4%</b>
HUMAN ECOLOGY	58.9%	59.6%	58.0%	66.7%	53.0%	<b>59.2%</b>
NURSING	46.5%	52.5%	50.6%	47.1%	63.4%	<b>52.0%</b>
SOCIAL WORK	50.0%	60.0%	62.5%	72.2%	56.0%	<b>60.1%</b>
<b>ACT SCORE</b>						
NO ACT SCORE	29.4%	34.6%	28.0%	25.0%	20.7%	<b>27.5%</b>
< 18	28.6%	49.1%	41.2%	45.9%	39.8%	<b>40.9%</b>
18 --- 21	50.3%	50.1%	48.8%	49.7%	48.2%	<b>49.4%</b>
22 --- 25	53.8%	57.6%	57.0%	59.7%	57.1%	<b>57.0%</b>
26 --- 29	64.5%	63.4%	63.9%	65.8%	67.6%	<b>65.0%</b>
30 --- 36	74.8%	69.2%	70.1%	74.8%	74.5%	<b>72.7%</b>
<b>RESIDENCY</b>						
OUT-OF-STATE	23.4%	22.9%	22.2%	23.7%	27.0%	<b>25.5%</b>
TENNESSEE RESIDENT	55.9%	57.3%	56.7%	59.5%	58.8%	<b>57.6%</b>
<b>HIGH SCHOOL GPA</b>						
NO GPA SCORE	31.8%	58.3%	56.3%	23.8%	40.9%	<b>42.2%</b>
BELOW 2.5	34.0%	35.0%	30.5%	32.4%	27.9%	<b>32.0%</b>
2.5 - 2.9	41.1%	44.1%	43.3%	45.2%	41.0%	<b>42.9%</b>
3.0 - 3.49	61.1%	58.8%	58.8%	59.6%	57.6%	<b>59.2%</b>
3.5 - 4.0	73.0%	72.3%	72.5%	75.4%	75.9%	<b>73.8%</b>

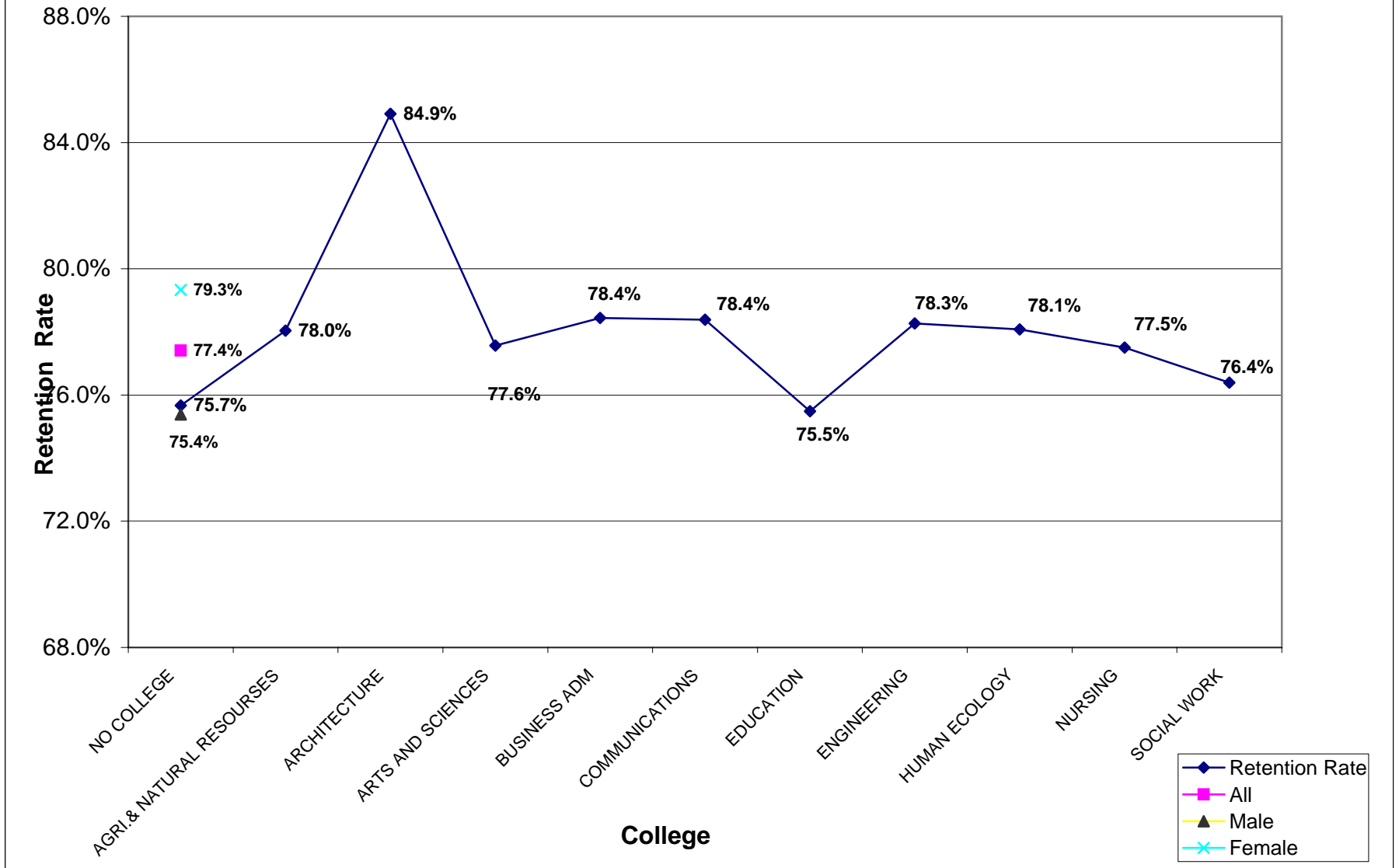
### AVERAGE SIX YEAR GRADUATION RATES (1992 - 1996)



## FIRST YEAR RETENTION RATES (1992 - 2001)

ACADEMIC YEAR	1992	1993	1994	1995	1996	1997	1998	1999	2000	2001	Average
<b>ALL</b>	<b>80.1%</b>	<b>78.6%</b>	<b>75.9%</b>	<b>76.8%</b>	<b>76.7%</b>	<b>78.1%</b>	<b>78.7%</b>	<b>75.4%</b>	<b>78.3%</b>	<b>75.5%</b>	<b>77.4%</b>
MALE	79.3%	77.3%	74.5%	74.8%	74.4%	76.7%	76.7%	71.7%	76.3%	72.1%	75.4%
FEMALE	80.9%	79.8%	77.4%	78.6%	78.9%	79.4%	80.6%	78.7%	80.2%	78.8%	79.3%
<b>RACE</b>											
BLACK	78.5%	78.9%	77.1%	83.7%	79.7%	84.0%	78.0%	72.6%	81.3%	75.2%	78.9%
OTHER	83.9%	81.6%	75.5%	84.2%	78.6%	76.2%	73.2%	74.4%	85.2%	72.4%	78.5%
WHITE	80.0%	78.4%	75.8%	76.2%	76.4%	77.8%	79.0%	75.7%	77.7%	75.7%	77.3%
<b>COLLEGE</b>											
NO COLLEGE	80.1%	77.8%	73.3%	75.1%	76.0%	75.2%	78.4%	71.9%	75.8%	73.1%	75.7%
AGRI.& NATURAL RESOURCES	86.3%	79.8%	76.2%	76.7%	76.5%	80.0%	76.3%	76.3%	79.2%	73.1%	78.0%
ARCHITECTURE	76.5%	79.7%	82.6%	79.5%	83.7%	89.9%	85.4%	89.1%	85.2%	97.5%	84.9%
ARTS AND SCIENCES	78.9%	75.5%	75.6%	77.2%	77.4%	78.5%	78.3%	77.2%	79.6%	77.5%	77.6%
BUSINESS ADM	82.5%	81.2%	76.0%	76.1%	80.0%	77.2%	79.4%	78.3%	78.0%	75.7%	78.4%
COMMUNICATIONS	77.9%	84.4%	82.6%	81.9%	69.2%	80.3%	77.0%	75.1%	79.2%	76.3%	78.4%
EDUCATION	76.3%	73.3%	76.1%	78.9%	66.9%	77.4%	80.4%	75.3%	79.6%	70.7%	75.5%
ENGINEERING	81.2%	79.9%	76.4%	79.5%	77.6%	82.5%	78.9%	71.9%	80.0%	74.8%	78.3%
HUMAN ECOLOGY	89.3%	80.7%	75.4%	77.3%	71.1%	68.9%	78.7%	82.1%	78.0%	79.3%	78.1%
NURSING	70.7%	83.2%	78.7%	68.6%	82.2%	82.4%	83.6%	75.2%	75.8%	74.6%	77.5%
SOCIAL WORK	58.3%	80.0%	93.8%	83.3%	84.0%	80.0%	68.2%	66.7%	80.0%	69.6%	76.4%
<b>ACT SCORE</b>											
NO ACT SCORE	67.6%	61.5%	56.0%	58.3%	37.9%	61.3%	61.1%	50.0%	54.5%	57.9%	56.6%
< 18	74.0%	66.7%	66.0%	73.8%	71.4%	67.5%	72.1%	72.4%	66.7%	52.9%	68.4%
18 --- 21	75.9%	75.7%	70.0%	68.9%	70.0%	73.1%	72.5%	68.5%	72.3%	68.3%	71.5%
22 --- 25	78.3%	78.0%	77.2%	77.4%	75.7%	77.2%	78.4%	74.8%	77.7%	77.0%	77.2%
26 --- 29	86.6%	82.9%	80.8%	82.3%	83.1%	83.8%	83.3%	81.5%	83.5%	84.0%	83.2%
30 --- 36	92.5%	87.4%	88.7%	89.6%	89.7%	89.5%	91.2%	88.6%	87.8%	84.4%	88.9%
<b>RESIDENCY</b>											
OUT-OF-STATE	76.4%	74.1%	74.8%	77.6%	72.2%	77.0%	75.2%	73.5%	74.8%	69.3%	74.5%
TENNESSEE RESIDENT	80.8%	79.4%	76.1%	76.6%	77.6%	78.4%	79.6%	75.9%	79.2%	77.0%	78.1%
<b>HIGH SCHOOL GPA</b>											
NO GPA SCORE	68.2%	70.8%	62.5%	47.6%	68.2%	73.7%	42.9%	47.6%	66.7%	47.8%	59.6%
BELOW 2.5	70.3%	61.7%	61.6%	54.5%	56.5%	55.5%	62.6%	51.1%	58.9%	53.7%	58.6%
2.5 - 2.9	74.4%	68.7%	67.3%	67.6%	67.8%	68.0%	68.5%	61.2%	69.4%	63.8%	67.7%
3.0 - 3.49	81.3%	81.4%	77.2%	77.6%	75.7%	78.6%	76.8%	75.0%	74.3%	74.6%	77.3%
3.5 - 4.0	88.6%	89.3%	86.9%	89.2%	88.0%	88.4%	89.0%	85.3%	87.5%	85.4%	87.8%

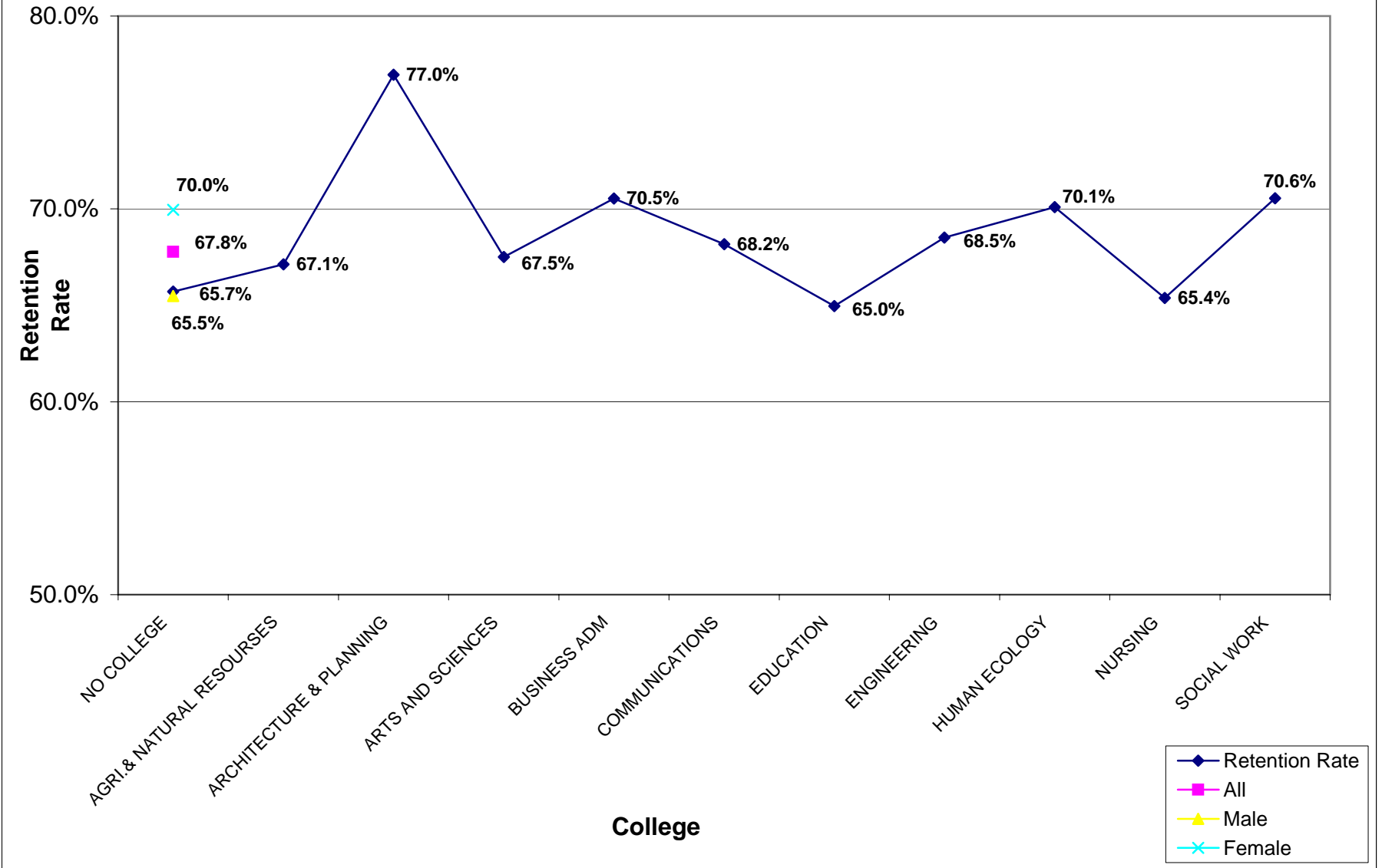
**AVERAGE FIRST YEAR RETENTION RATES (1992 - 2001)**



## SECOND YEAR RETENTION RATES (1992 - 2000)

ACADEMIC YEAR	1992	1993	1994	1995	1996	1997	1998	1999	2000	Average
<b>ALL</b>	<b>68.5%</b>	<b>69.2%</b>	<b>66.7%</b>	<b>66.3%</b>	<b>67.3%</b>	<b>68.1%</b>	<b>68.8%</b>	<b>65.5%</b>	<b>69.6%</b>	<b>67.8%</b>
MALE	67.4%	67.6%	65.0%	63.3%	65.2%	65.8%	66.1%	60.6%	68.3%	65.5%
FEMALE	69.6%	70.8%	68.6%	69.1%	69.4%	70.3%	71.2%	69.7%	70.9%	70.0%
<b>RACE</b>										
BLACK	63.2%	61.7%	67.4%	73.2%	67.7%	70.8%	68.5%	62.5%	71.6%	67.4%
OTHER	69.6%	75.7%	63.7%	75.9%	72.1%	68.0%	71.0%	65.9%	76.5%	70.9%
WHITE	68.8%	69.5%	66.8%	65.6%	67.1%	67.9%	68.7%	65.7%	69.1%	67.7%
<b>COLLEGE</b>										
NO COLLEGE	65.0%	68.0%	65.4%	65.1%	64.5%	65.0%	68.2%	63.3%	66.9%	65.7%
AGRI.& NATURAL RESOURCES	72.6%	66.1%	65.9%	63.7%	68.9%	72.0%	66.2%	59.9%	68.8%	67.1%
ARCHITECTURE	73.5%	68.8%	81.2%	60.3%	80.2%	84.8%	74.4%	84.2%	85.2%	77.0%
ARTS AND SCIENCES	67.2%	68.4%	65.7%	64.8%	68.5%	66.8%	68.5%	67.0%	70.7%	67.5%
BUSINESS ADM	73.3%	70.3%	69.4%	70.3%	70.9%	70.9%	71.2%	69.7%	68.8%	70.5%
COMMUNICATIONS	70.7%	73.8%	69.4%	69.6%	59.7%	69.9%	64.8%	64.4%	71.2%	68.2%
EDUCATION	64.5%	66.7%	64.8%	68.9%	60.7%	66.7%	66.0%	60.5%	65.9%	65.0%
ENGINEERING	70.8%	69.7%	66.2%	68.4%	68.6%	69.0%	69.6%	60.3%	74.0%	68.5%
HUMAN ECOLOGY	69.6%	77.2%	68.1%	68.2%	62.7%	67.2%	72.0%	72.6%	73.2%	70.1%
NURSING	59.6%	71.3%	61.8%	57.8%	74.3%	72.1%	63.9%	61.9%	65.7%	65.4%
SOCIAL WORK	50.0%	80.0%	75.0%	77.8%	76.0%	65.0%	68.2%	75.0%	68.0%	70.6%
<b>ACT SCORE</b>										
NO ACT SCORE	52.9%	46.2%	28.0%	50.0%	31.0%	38.7%	55.6%	50.0%	45.5%	44.2%
< 18	57.1%	63.2%	53.6%	63.9%	57.1%	55.3%	55.8%	56.9%	60.6%	58.2%
18 --- 21	63.2%	64.1%	59.8%	57.8%	61.2%	62.3%	61.4%	57.9%	63.0%	61.2%
22 --- 25	67.6%	69.6%	68.5%	67.2%	65.9%	67.5%	69.2%	64.8%	68.4%	67.6%
26 --- 29	75.2%	74.4%	72.7%	72.6%	74.1%	75.2%	73.2%	72.1%	75.2%	73.9%
30 --- 36	83.2%	79.1%	82.8%	77.3%	80.9%	78.4%	83.8%	79.8%	82.0%	80.8%
<b>RESIDENCY</b>										
OUT-OF-STATE	62.4%	64.0%	63.1%	63.3%	62.7%	65.8%	60.6%	63.2%	63.2%	63.1%
TENNESSEE RESIDENT	69.7%	70.2%	67.5%	67.0%	68.3%	68.6%	70.9%	66.0%	71.2%	68.8%
<b>HIGH SCHOOL GPA</b>										
NO GPA SCORE	50.0%	62.5%	50.0%	33.3%	59.1%	57.9%	33.3%	47.6%	33.3%	47.4%
BELOW 2.5	53.2%	47.1%	42.2%	42.4%	43.9%	38.6%	47.5%	38.3%	45.8%	44.3%
2.5 - 2.9	58.6%	58.6%	57.7%	54.8%	54.0%	56.0%	53.9%	50.3%	58.6%	55.8%
3.0 - 3.49	71.7%	72.2%	69.6%	67.0%	67.3%	69.8%	66.7%	63.3%	66.0%	68.2%
3.5 - 4.0	81.5%	82.1%	80.2%	81.1%	81.3%	79.9%	82.7%	77.3%	80.1%	80.7%

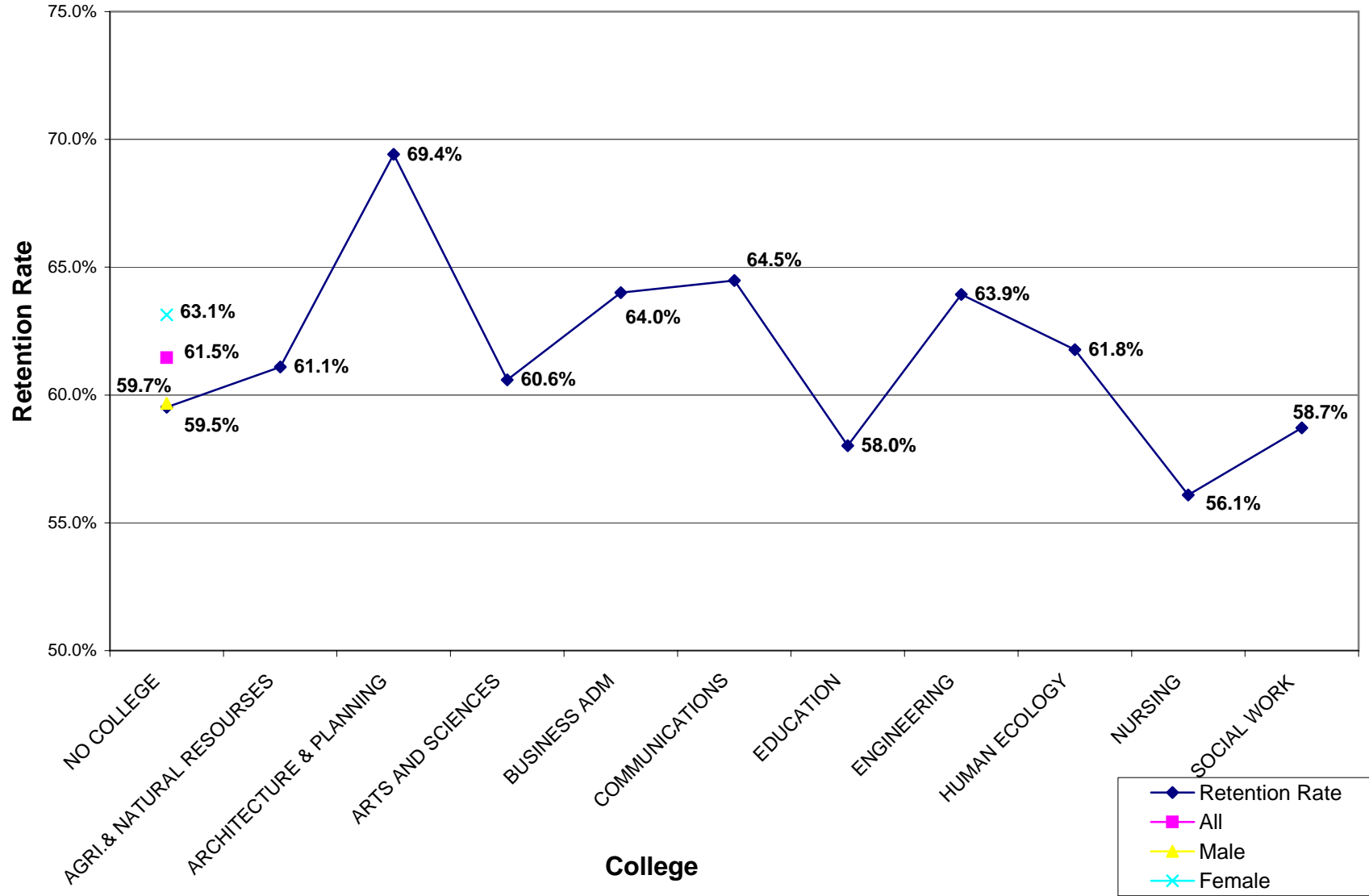
**AVERAGE SECOND YEAR RETENTION RATES (1992 - 2000)**



### THIRD YEAR RETENTION RATES (1992 - 1999)

ACADEMIC YEAR	1992	1993	1994	1995	1996	1997	1998	1999	Average
<b>ALL</b>	<b>62.4%</b>	<b>52.0%</b>	<b>61.8%</b>	<b>62.2%</b>	<b>63.3%</b>	<b>63.9%</b>	<b>64.5%</b>	<b>61.6%</b>	<b>61.5%</b>
MALE	63.3%	50.4%	60.5%	60.4%	61.6%	61.4%	61.5%	58.3%	59.7%
FEMALE	61.5%	53.6%	63.2%	63.9%	64.9%	66.3%	67.2%	64.5%	63.1%
<b>RACE</b>									
BLACK	56.5%	41.7%	61.8%	68.6%	58.3%	65.4%	61.9%	59.1%	59.2%
OTHER	64.3%	58.3%	56.9%	68.4%	62.9%	58.7%	64.5%	64.6%	62.3%
WHITE	62.8%	52.5%	62.0%	61.6%	63.6%	64.0%	64.7%	61.7%	61.6%
<b>COLLEGE</b>									
NO COLLEGE	60.1%	47.0%	61.3%	63.0%	61.2%	60.4%	64.2%	59.0%	59.5%
AGRI.& NATURAL RESOURCES	68.5%	56.0%	61.9%	58.2%	61.4%	66.0%	62.6%	54.2%	61.1%
ARCHITECTURE	69.1%	48.4%	73.9%	60.3%	75.6%	77.8%	72.0%	78.2%	69.4%
ARTS AND SCIENCES	59.3%	52.3%	59.1%	59.0%	64.0%	62.8%	63.8%	64.4%	60.6%
BUSINESS ADM	66.9%	52.4%	62.8%	66.2%	67.4%	65.5%	67.5%	63.3%	64.0%
COMMUNICATIONS	63.5%	61.5%	67.8%	66.7%	57.2%	72.8%	62.4%	63.9%	64.5%
EDUCATION	57.9%	51.7%	62.0%	62.7%	49.7%	63.8%	59.5%	56.8%	58.0%
ENGINEERING	66.3%	58.3%	64.3%	66.7%	67.5%	64.2%	64.8%	59.4%	63.9%
HUMAN ECOLOGY	62.5%	57.9%	62.3%	65.2%	57.8%	57.4%	68.0%	63.1%	61.8%
NURSING	54.5%	38.6%	57.3%	42.2%	67.3%	75.0%	55.7%	58.1%	56.1%
SOCIAL WORK	33.3%	53.3%	62.5%	66.7%	72.0%	60.0%	63.6%	58.3%	58.7%
<b>ACT SCORE</b>									
NO ACT SCORE	52.9%	42.3%	36.0%	20.8%	27.6%	32.3%	38.9%	44.4%	36.9%
< 18	46.8%	42.1%	54.6%	58.2%	44.9%	48.8%	50.0%	48.3%	49.2%
18 --- 21	57.8%	43.8%	56.2%	54.0%	54.9%	58.2%	57.2%	54.2%	54.5%
22 --- 25	61.1%	54.0%	62.3%	62.4%	62.3%	64.3%	64.7%	60.6%	61.5%
26 --- 29	69.9%	58.4%	68.8%	70.0%	72.3%	68.9%	68.5%	68.8%	68.2%
30 --- 36	73.8%	62.6%	71.1%	74.5%	78.1%	75.3%	81.3%	76.2%	74.1%
<b>RESIDENCY</b>									
OUT-OF-STATE	56.9%	46.6%	56.5%	57.3%	57.7%	61.8%	56.3%	58.0%	56.4%
TENNESSEE RESIDENT	63.5%	53.0%	62.9%	63.3%	64.4%	64.3%	66.5%	62.4%	62.5%
<b>HIGH SCHOOL GPA</b>									
NO GPA SCORE	45.5%	54.2%	62.5%	23.8%	54.5%	57.9%	28.6%	42.9%	46.2%
BELOW 2.5	46.8%	29.9%	40.3%	37.6%	39.9%	37.8%	40.9%	37.2%	38.8%
2.5 - 2.9	51.7%	39.4%	52.2%	51.2%	49.2%	51.7%	50.1%	45.5%	48.9%
3.0 - 3.49	66.9%	54.5%	64.9%	63.8%	63.2%	63.8%	62.7%	59.3%	62.4%
3.5 - 4.0	74.8%	66.7%	74.3%	76.0%	77.7%	76.6%	78.0%	73.7%	74.7%

### AVERAGE THIRD YEAR RETENTION RATES (1992 - 1999)



## FOURTH YEAR RETENTION RATES (1992 - 1998)

<b>ACADEMIC YEAR</b>	<b>1992</b>	<b>1993</b>	<b>1994</b>	<b>1995</b>	<b>1996</b>	<b>1997</b>	<b>1998</b>	<b>AVERAGE</b>
<b>ALL</b>	<b>39.4%</b>	<b>37.7%</b>	<b>37.4%</b>	<b>35.7%</b>	<b>33.9%</b>	<b>35.4%</b>	<b>36.6%</b>	<b>36.6%</b>
MALE	44.9%	44.1%	43.3%	39.7%	39.5%	40.4%	42.8%	42.1%
FEMALE	33.7%	31.3%	31.2%	32.0%	28.4%	30.7%	31.0%	31.2%
<b>RACE</b>								
BLACK	35.9%	37.1%	40.3%	43.8%	35.9%	42.0%	38.8%	39.1%
OTHER	42.0%	44.7%	36.3%	33.8%	34.3%	33.7%	43.5%	38.3%
WHITE	39.5%	37.4%	37.3%	35.3%	33.8%	35.1%	36.2%	36.4%
<b>COLLEGE</b>								
NO COLLEGE	41.0%	38.5%	37.2%	38.3%	35.0%	37.5%	37.2%	37.8%
AGRI.& NATURAL RESOURCES	42.7%	34.9%	38.1%	32.9%	35.6%	39.3%	38.8%	37.5%
ARCHITECTURE	51.5%	48.4%	62.3%	54.8%	72.1%	62.6%	57.3%	58.4%
ARTS AND SCIENCES	35.8%	31.7%	32.6%	31.0%	29.8%	31.0%	33.2%	32.2%
BUSINESS ADM	34.5%	37.4%	36.9%	34.3%	31.6%	30.7%	35.6%	34.4%
COMMUNICATIONS	33.1%	32.8%	36.4%	29.7%	22.0%	27.7%	29.7%	30.2%
EDUCATION	34.2%	28.3%	28.2%	28.0%	19.0%	27.7%	28.1%	27.6%
ENGINEERING	52.7%	51.7%	51.1%	48.0%	52.2%	50.5%	47.8%	50.6%
HUMAN ECOLOGY	35.7%	33.3%	33.3%	33.3%	26.5%	18.0%	32.0%	30.3%
NURSING	26.3%	29.7%	21.3%	25.5%	23.8%	27.9%	23.0%	25.4%
SOCIAL WORK	8.3%	40.0%	37.5%	22.2%	16.0%	20.0%	27.3%	24.5%
<b>ACT SCORE</b>								
NO ACT SCORE	35.3%	42.3%	28.0%	8.3%	24.1%	9.7%	27.8%	25.1%
LT 18	19.5%	33.3%	32.0%	39.3%	24.5%	34.1%	35.6%	31.2%
18 --- 21	39.1%	38.4%	35.8%	34.7%	32.9%	37.7%	35.4%	36.3%
22 --- 25	40.0%	38.3%	39.2%	35.6%	35.0%	35.3%	39.1%	37.5%
26 --- 29	41.3%	37.1%	39.3%	38.8%	35.2%	34.5%	36.2%	37.5%
30 --- 36	39.3%	33.0%	34.3%	32.0%	33.1%	34.3%	32.1%	34.0%
<b>RESIDENCY</b>								
NON-RES	32.5%	33.5%	33.9%	34.7%	29.2%	33.1%	31.3%	32.6%
TN RES	40.7%	38.4%	38.1%	35.9%	34.8%	36.0%	38.0%	37.4%
<b>HIGH SCHOOL GPA</b>								
NO GPA SCORE	31.8%	37.5%	37.5%	23.8%	40.9%	26.3%	14.3%	30.3%
BELOW 2.5	34.6%	33.9%	31.1%	29.3%	30.2%	29.1%	29.8%	31.1%
2.5 - 2.9	38.1%	37.1%	36.4%	35.9%	32.6%	34.3%	36.7%	35.9%
3.0 - 3.49	41.7%	39.4%	40.2%	37.7%	36.5%	39.5%	38.0%	39.0%
3.5 - 4.0	40.2%	37.5%	37.7%	35.3%	33.1%	33.8%	36.6%	36.3%

### AVERAGE FOURTH YEAR RETENTION RATES (1992 - 1998)

