

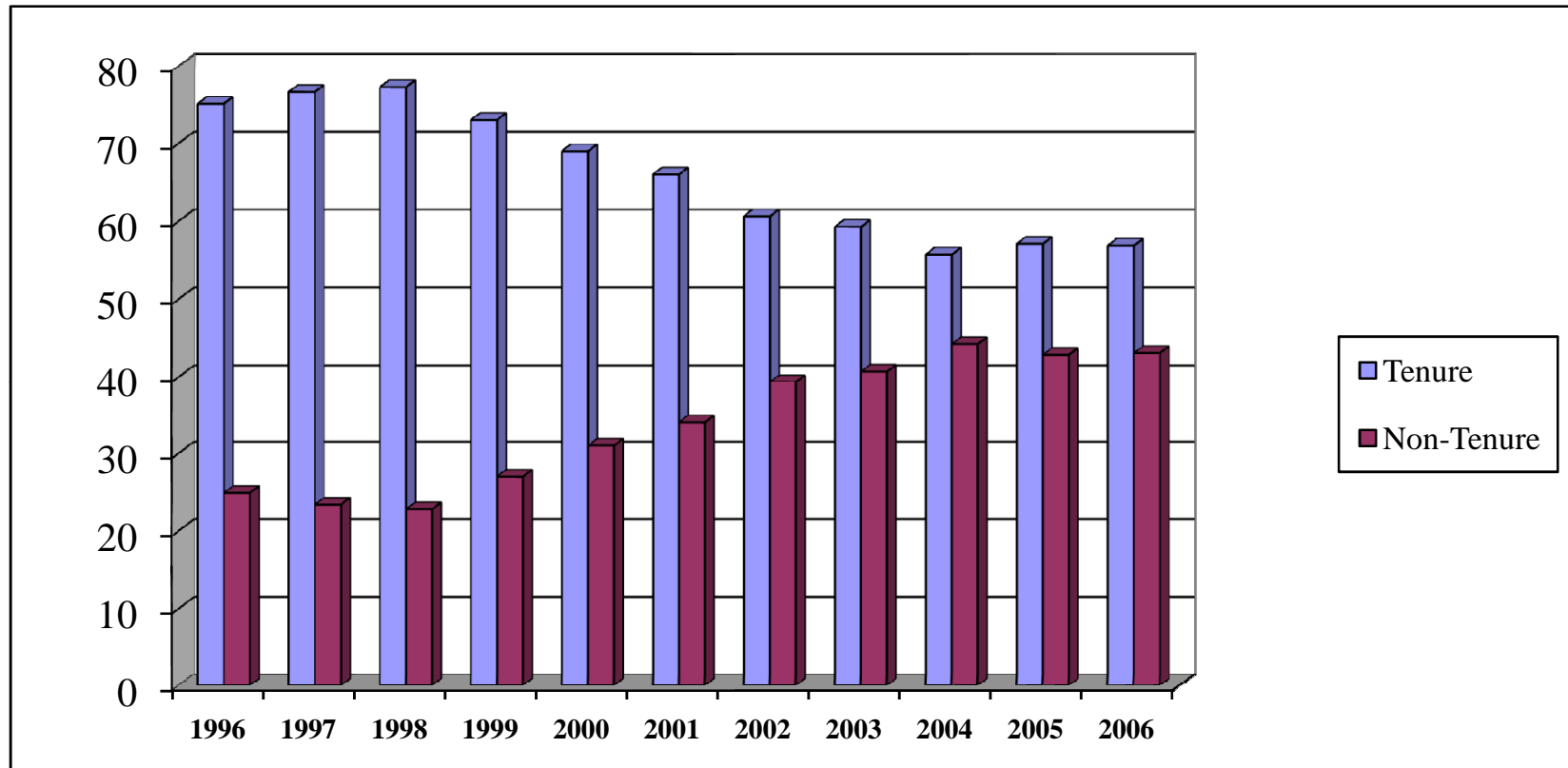
Full-Time Instructional Faculty
By College, Appointment Type, Tenure Status and Rank
Fall 2006

College	Number of Faculty	Appointment		Tenure Status		
		9-Month	12-Month	Tenured	On-Track	Non-Tenured
UNIVERSITY TOTAL	1,397	1,165	232	795	334	268
UNIVERSITY PERCENTAGES	100.0	83.4	16.6	56.9	23.9	19.2
Knoxville Total	1,179	1,137	42	659	285	235
Knoxville Percentages	100.0	96.4	3.6	55.9	24.2	19.9
Architecture & Design	29	27	2	17	8	4
Arts & Sciences - Humanities	265	264	1	126	50	89
Arts & Sciences - Natural Sciences	211	199	12	131	43	37
Arts & Sciences - Social Sciences	153	152	1	82	40	31
Business Administration	102	102	0	61	19	22
Communication & Information	63	59	4	37	15	11
Education, Health & Human Sciences	140	131	9	73	50	17
Engineering	116	112	4	79	31	6
Law	30	25	5	24	6	0
Nursing	41	38	3	12	12	17
Social Work	29	28	1	17	11	1
Agricultural Sciences & Natural Resources	102	5	97	73	24	5
Space Institute	24	23	1	16	3	5
Veterinary Medicine	92	0	92	47	22	23

College	Number of Faculty	Academic Rank				
		Professor	Associate Professor	Assistant Professor	Instructor	Lecturer
UNIVERSITY TOTAL	1,397	497	336	332	32	200
UNIVERSITY PERCENTAGES	100.0	35.6	24.1	23.8	2.3	14.3
Knoxville Total	1,179	407	273	277	24	198
Knoxville Percentages	100.0	34.5	23.2	23.5	2.0	16.8
Architecture & Design	29	9	10	6	0	4
Arts & Sciences - Humanities	265	71	56	50	1	87
Arts & Sciences - Natural Sciences	211	103	30	42	1	35
Arts & Sciences - Social Sciences	153	45	36	40	1	31
Business Administration	102	37	25	19	0	21
Communication & Information	63	16	19	16	1	11
Education, Health & Human Sciences	140	49	25	53	5	8
Engineering	116	52	36	25	3	0
Law	30	13	17	0	0	0
Nursing	41	5	8	17	11	0
Social Work	29	7	11	9	1	1
Agricultural Sciences & Natural Resources	102	48	27	23	3	1
Space Institute	24	15	7	2	0	0
Veterinary Medicine	92	27	29	30	5	1

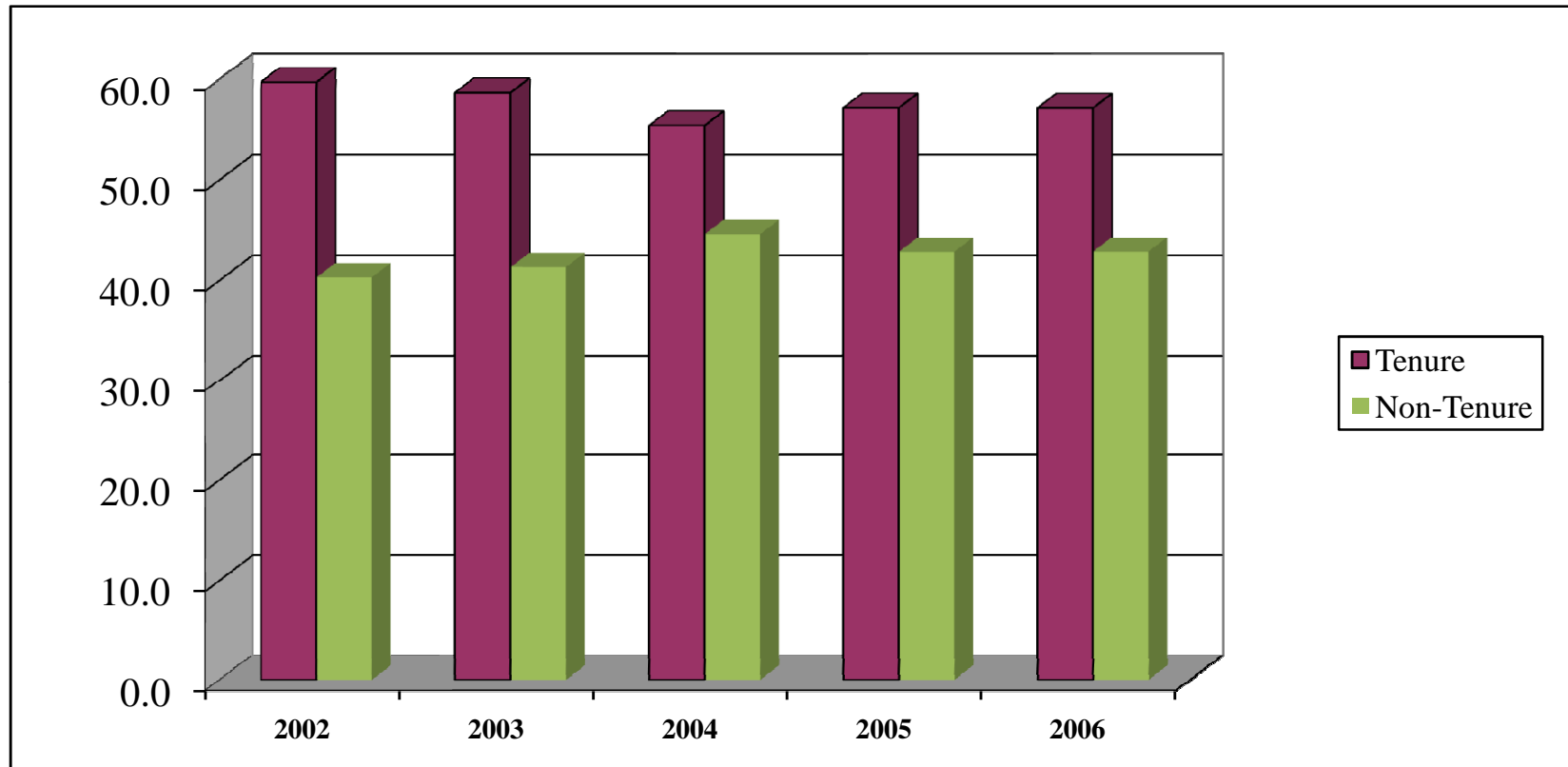
Source: IRIS

**Tenured and Non-Tenured Full-Time Instructional Faculty
Fall 1996-2006
(As Percentages)**



Source: IRIS

**Tenured and Non-Tenured Full-Time Instructional Faculty
Fall 2002-2006
(As Percentages)
Knoxville**



Source: IRIS

Full-Time Instructional Faculty
By College, Gender, Highest Degree Held and Race
Fall 2006

Colleges	Number of Faculty	Gender		HIGHEST DEGREE HELD				
		Men	Women	PhD	Profes- sional	Masters	Bachelor	High School
UNIVERSITY TOTAL	1,397	896	501	1,067	90	225	14	1
UNIVERSITY PERCENTAGES	100.0	64.1	35.9	76.4	6.4	16.1	1.0	0.1
Knoxville Total	1,179	733	446	922	26	216	14	1
Knoxville Percentages	100.0	62.2	37.8	78.2	2.2	18.3	1.2	0.1
Architecture & Design	29	20	9	6	0	20	3	0
Arts & Sciences - Humanities	265	137	128	167	0	91	6	1
Arts & Sciences - Natural Sciences	211	168	43	191	0	20	0	0
Arts & Sciences - Social Sciences	153	100	53	141	0	11	1	0
Business Administration	102	76	26	88	1	12	1	0
Communication & Information	63	28	35	51	0	11	1	0
Education, Health & Human Sciences	140	59	81	108	2	29	1	0
Engineering	116	109	7	114	0	1	1	0
Law	30	18	12	3	23	4	0	0
Nursing	41	3	38	25	0	16	0	0
Social Work	29	15	14	28	0	1	0	0
Agricultural Sciences & Natural Resources	102	83	19	93	1	8	0	0
Space Institute	24	23	1	22	1	1	0	0
Veterinary Medicine	92	57	35	30	62	0	0	0

Colleges	Number of Faculty	RACE				
		American Indian	Asian	Black	Hispanic	White
UNIVERSITY TOTAL	1,397	5	117	54	30	1,191
UNIVERSITY PERCENTAGES	100.0	0.4	8.4	3.9	2.1	85.3
Knoxville Total	1,179	4	99	46	27	1,003
Knoxville Percentages	100.0	0.3	8.4	3.9	2.3	85.1
Architecture & Design	29	0	1	1	0	27
Arts & Sciences - Humanities	265	0	8	13	13	231
Arts & Sciences - Natural Sciences	211	1	22	1	8	179
Arts & Sciences - Social Sciences	153	1	9	5	0	138
Business Administration	102	0	8	2	2	90
Communication & Information	63	0	4	2	2	55
Education, Health & Human Sciences	140	1	11	11	0	117
Engineering	116	0	33	2	1	80
Law	30	0	0	3	0	27
Nursing	41	0	1	2	0	38
Social Work	29	1	2	4	1	21
Agricultural Sciences & Natural Resources	102	0	8	2	0	92
Space Institute	24	0	4	1	0	19
Veterinary Medicine	92	1	6	5	3	77

Source: IRIS

**Age and Length of Service of Full-Time Instructional Faculty
Fall 1997-2006
(As Percentages)**

Age Distribution	Fall 1997	Fall 1998	Fall 1999	Fall 2000	Fall 2001	Fall 2002	Fall 2003	Fall 2004	Fall 2005	Fall 2006
< 30	1.0	0.6	1.0	1.4	1.6	2.3	1.5	1.8	1.6	1.9
30-39	15.6	15.5	12.8	13.4	14.2	17.1	18.4	20.5	19.8	21.0
40-49	31.4	32.0	31.4	31.9	31.2	29.0	27.8	26.1	26.6	25.3
50-59	32.6	33.6	35.4	34.4	34.7	34.0	31.5	30.6	30.9	31.1
60-65	14.4	14.0	14.7	14.1	14.1	13.4	15.3	15.4	14.7	14.4
> 65	5.0	4.2	4.7	4.7	4.3	4.2	5.5	5.7	6.4	6.3

Length of Service	Fall 1997	Fall 1998	Fall 1999	Fall 2000	Fall 2001	Fall 2002	Fall 2003	Fall 2004	Fall 2005	Fall 2006
0 - 4	19.1	19.0	16.3	19.2	17.1	31.3	32.5	33.6	33.96	33.3
5 - 9	17.5	17.5	18.7	18.7	18.6	12.8	12.0	14.3	14.27	17.5
10 - 14	12.7	13.5	14.6	13.7	15.3	12.2	13.8	13.6	13.03	11.1
15 - 19	12.5	12.2	11.9	11.4	11.6	12.4	10.1	9.5	10.07	10.9
>19	38.3	37.8	38.4	37.0	37.4	31.3	31.5	29.1	28.67	27.2

Source: IRIS

**Distribution of Employees
By EEO Category
Fall 2006**

EEO CATEGORY	TOTAL NUMBER	MEN		WOMEN		WHITE		BLACK		TOTAL MINORITY	
		Number	Percent	Number	Percent	Number	Percent	Number	Percent	Number	Percent
UNIVERSITY TOTALS	8,325	4,362	52.4	3,963	47.6	7,273	87.4	587	7.1	1,052	12.6
EXECUTIVE/ADMINISTRATIVE/MANAGERIAL	338	186	55.0	152	45.0	308	91.1	26	7.7	30	8.9
Executive	56	39	69.6	17	30.4	51	91.1	4	7.1	5	8.9
Administrative	282	147	52.1	135	47.9	257	91.1	22	7.8	25	8.9
FACULTY	1,954	1,214	62.1	740	37.9	1,677	85.8	71	3.6	277	14.2
Professor	618	515	83.3	103	16.7	563	91.1	11	1.8	55	8.9
Associate Professor	406	252	62.1	154	37.9	352	86.7	16	3.9	54	13.3
Assistant Professor	436	241	55.3	195	44.7	316	72.5	29	6.7	120	27.5
Instructor	65	16	24.6	49	75.4	62	95.4	2	3.1	3	4.6
Lecturer	406	175	43.1	231	56.9	372	91.6	12	3.0	34	8.4
Other Faculty	23	15	65.2	8	34.8	12	52.2	1	4.3	11	47.8
PROFESSIONAL	1,600	778	48.6	822	51.4	1,366	85.4	79	4.9	234	14.6
Professional	1,600	778	48.6	822	51.4	1,366	85.4	79	4.9	234	14.6
SECRETARIAL/CLERICAL	1,560	156	10.0	1,404	90.0	1,347	86.3	182	11.7	213	13.7
Supervisory	49	19	38.8	30	61.2	46	93.9	2	4.1	3	6.1
Non-Supervisory	1,511	137	9.1	1,374	90.9	1,301	86.1	180	11.9	210	13.9
TECHNICAL/PARAPROFESSIONAL	498	216	43.4	282	56.6	458	92.0	13	2.6	40	8.0
Supervisory	10	7	70.0	3	30.0	10	100.0	0	0.0	0	0.0
Non-Supervisory	488	209	42.8	279	57.2	448	91.8	13	2.7	40	8.2
SKILLED CRAFTS	349	342	98.0	7	2.0	343	98.3	6	1.7	6	1.7
Supervisory	37	37	100.0	0	0.0	36	97.3	1	2.7	1	2.7
Non-Supervisory	312	305	97.8	7	2.2	307	98.4	5	1.6	5	1.6
SERVICE MAINTENANCE	2,026	1,470	72.6	556	27.4	1,774	87.6	210	10.4	252	12.4
Supervisory	71	50	70.4	21	29.6	58	81.7	13	18.3	13	18.3
Non-Supervisory	1,955	1,420	72.6	535	27.4	1,716	87.8	197	10.1	239	12.2

Source: IRIS

**Distribution of Employees
By EEO Category and Budget Entity
Fall 2006**

EEO CATEGORY	TOTAL				Knoxville			
	Number	FTE	Full-time	Part-time	Number	FTE	Full-time	Part-time
All Employees	8,325	7,603	7,041	1,284	6,496	5,891	5,486	1,010
EXECUTIVE/ADMINISTRATIVE/MANAGERIAL	338	332	323	15	287	282	275	12
FACULTY	1,954	1,772	1,650	304	1,667	1,500	1,385	282
PROFESSIONAL	1,600	1,550	1,474	126	1,013	970	905	108
SECRETARIAL/CLERICAL	1,560	1,444	1,293	267	1,140	1,057	980	160
TECHNICAL/PARAPROFESSIONAL	498	449	409	89	322	285	260	62
SKILLED CRAFTS	349	345	343	6	331	328	327	4
SERVICE MAINTENANCE	2,026	1,712	1,549	477	1,736	1,468	1,354	382

EEO CATEGORY	Space Institute				Institute of Agriculture (Veterinary Medicine)			
	Number	FTE	Full-time	Part-time	Number	FTE	Full-time	Part-time
All Employees	109	96	88	21	1,720	1,617	1,467	253
EXECUTIVE/ADMINISTRATIVE/MANAGERIAL	8	7	7	1	43	43	41	2
FACULTY	33	26	24	9	254	246	241	13
PROFESSIONAL	23	21	19	4	564	559	550	14
SECRETARIAL/CLERICAL	20	18	16	4	400	368	297	103
TECHNICAL/PARAPROFESSIONAL	7	7	6	1	169	157	143	26
SKILLED CRAFTS	9	8	8	1	9	8	8	1
SERVICE MAINTENANCE	9	9	8	1	281	235	187	94

Source: IRIS

Note: Regular and term employees

Knoxville 2002-2006 EEO Category

	2002	2003	2004	2005	2006
All Employees	5,526	6,128	6,538	6,620	6,496
EXECUTIVE/ADMINISTRATIVE/MANAGERIAL	272	280	289	287	287
FACULTY	1,591	1,613	1,641	1,624	1,667
PROFESSIONAL	991	1,017	1,043	1,046	1,013
SECRETARIAL/CLERICAL	1,227	1,264	1,220	1,205	1,140
TECHNICAL/PARAPROFESSIONAL	378	372	346	338	322
SKILLED CRAFTS	326	331	336	346	331
SERVICE MAINTENANCE	741	1,251	1,663	1,774	1,736

Updated August 2007

Chairs of Excellence As of October 2006

CHAIR NAME	CHAIRHOLDER
Knoxville	
Bernadotte E. Schmitt Chair of History	Dr. Robert J. Norrell
Bernard Blasingame Chair in Agricultural Policy	Dr. Daryll E. Ray
Bruce Chair of Excellence in Business Policy	Dr. John T. Mentzer
Chair of Science, Technology & Medical Writing	Dr. Mark Littmann
Clayton Homes Chair in Finance	Dr. James Wansley
Condra Chair of Computer Integrated Engineering & Manufacturing	vacant
Condra Chair of Power Electronics Applications	vacant
Forrest & Patsy Shumway Chair in Romance Language	Dr. Patrick Brady
Goodrich Chair in Waste Management & Environmental Engineering	Dr. Thomas Urbanik, III
Hodges Chair of English	vacant
Ivan Racheff Chair of Materials Science & Engineering	Dr. Peter K. Liaw
Ivan Racheff Chair of Plant Molecular Genetics	Dr. Neal Stewart
J. Fred Holly Chair in Political Economy	Dr. William S. Neilson
Nancy Gore Hunger Chair in Environmental Studies	Dr. Daniel Simberloff
Pilot Chair in Leadership	Dr. Jan R. Williams
UTK Willis Lincoln Chair in Physics	Dr. John Quinn
Space Institute	
Edward J. and Carolyn P. Boling Chair of Space Propulsion	Dr. Gary A. Flandro
H. H. Arnold Chair of Computational Mechanics	vacant

Source: Office of the Vice President for Research